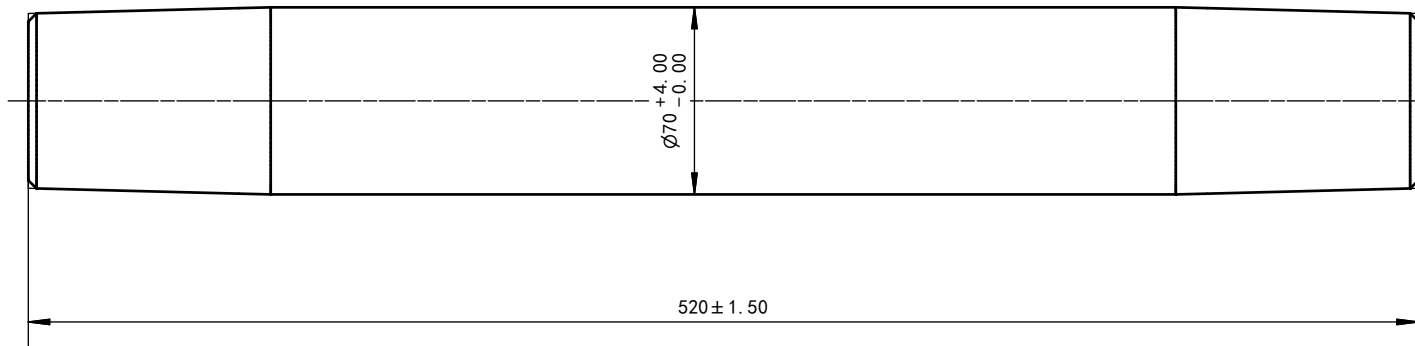


会  
签  
样  
SIGN



Technical Requirements:

- 1、 It is made of 95% alumina ceramic, and the material should meet the corresponding standards, and the taper tolerance is controlled by a special gauge;;
- 2、 It is produced by isostatic pressing process, and the rest of the surface should be polished except for the end face;
- 3、 The rod body is not glazed, and the surface should be smooth without obvious defects;
- 4、 Straightness is not more than 1mm/m;
- 5、 It is required that the cone surface is in contact with the large end when it is matched with the coupling, and its contact surface is greater than 70%;
- 6、 Both ends are allowed to retain the center hole or retain the process boss, length  $\leq 4$ ;
- 7、 Rated working voltage: 80KV.

本图及所含的技术信息, 为艾尼科环保技术(安徽)有限公司所有, 受法律保护, 事先未经本公司书面许可, 不得以任何方式抄袭、复制或用于其他工程。提供或披露给第三方。  
THIS DRAWING AND THE TECHNICAL INFORMATION IT CONTAINS ARE THE PROPERTY OF EETO. IT MUST NOT BE TRACED, COPIED, OR USED IN OTHER PROJECT NOR DISCLOSED TO ANY THIRD PARTY WITHOUT OUR WRITTEN CONSENT.